

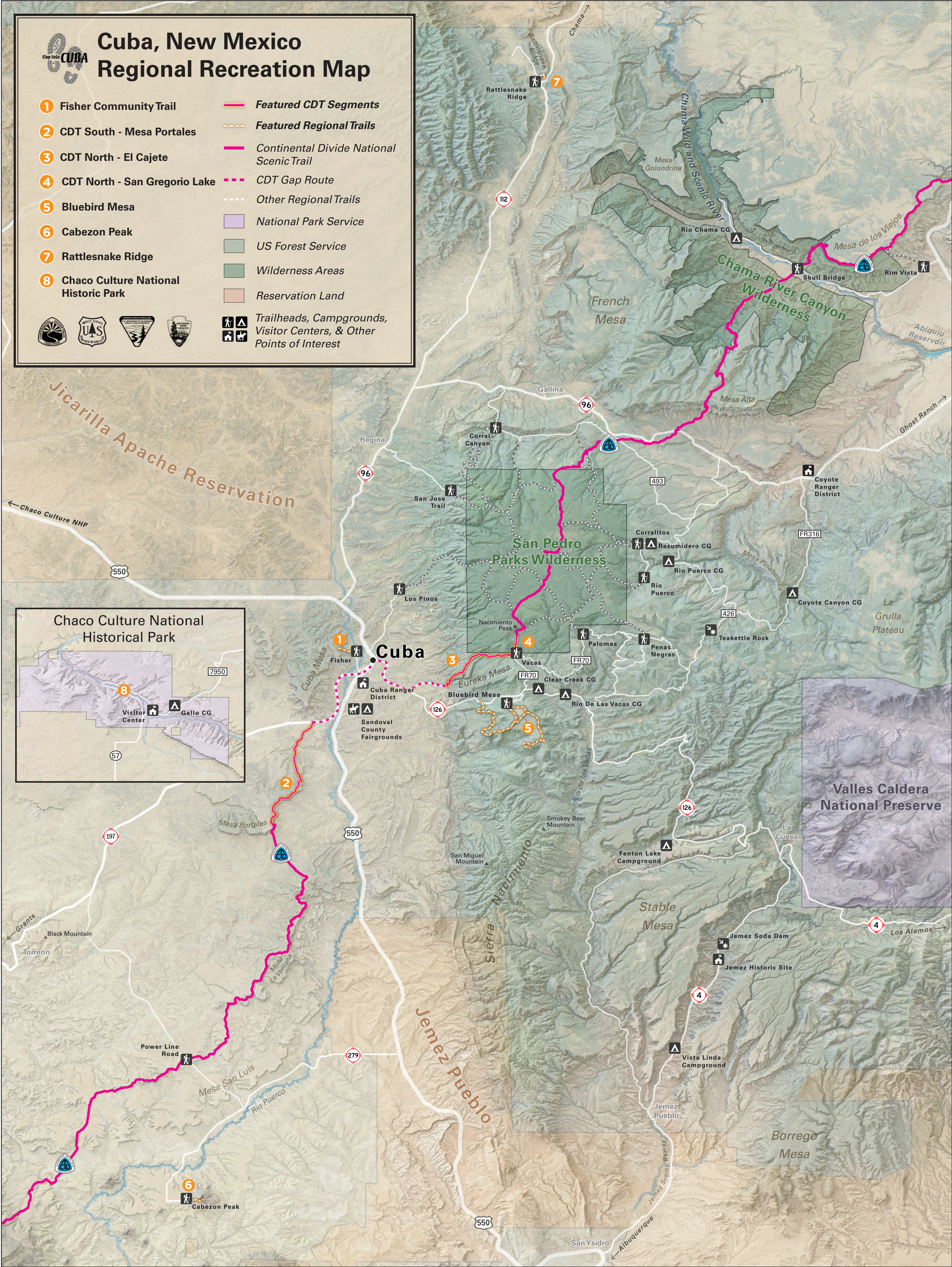
# Cuba New Mexico

## REGIONAL RECREATION MAP



© 2020 Continental Divide Trail Coalition

Information in this map subject to change. Please consult secondary sources, including local land managers and the Cuba Visitor Center, and take responsibility for your own safety by packing appropriately and being prepared for all weather when recreating outdoors.



### Fisher Community Trail

Sweeping views, fanciful sandstone formations and petrified logs await those who ascend a beautiful mile-long trail that takes you to the top of Mesa de Cuba.

1 Mile Each Way Scenic Hike Dogs Ok

### CDT South - Mesa Portales

An easy walk through sagebrush flats and juniper-pinyon covered hills to the top of beautiful high desert mesas with views of the forested Nacimiento Mountains and colorful badlands.

3.1 Miles Each Way Scenic Hike Dogs Ok



### CDT North - El Cajete

A beautiful hike from the Sierra Nacimiento foothills to the top of the San Pedro Parks Wilderness, featuring panoramic views, wildflowers, aspen groves, and lush forest vegetation.

5.4 Miles Each Way Scenic Hike Dogs Ok

### CDT North - San Gregorio Lake

Stroll through the San Pedro Parks wilderness area on a fir and spruce forested high elevation trail, and arrive at open meadows and a breathtaking high mountain lake.

2.3 Miles Round Trip Lake Hike Dogs Ok



### Bluebird Mesa

Cool and easy cycling among aspens and firs on a relatively flat mesa-top network of pleasant double-tracks at 9,200 feet of elevation.

3.5+ Miles Mountain Bike Route Pets on Leash

### Cabezon Peak

A short but highly scenic hike to the base of one of northern New Mexico's iconic landmarks. This hike features unique geology, spring wildflowers, and sweeping views of distant mountain ranges.

0.8 Miles Round Trip Scenic Hike Dogs Ok



### Rattlesnake Ridge

An easy walk on a nice trail through a juniper and pinyon forest to archaeological sites of the Gallina culture in a remote part of New Mexico.

1.5 Miles Round Trip Cultural Hike Dogs Ok

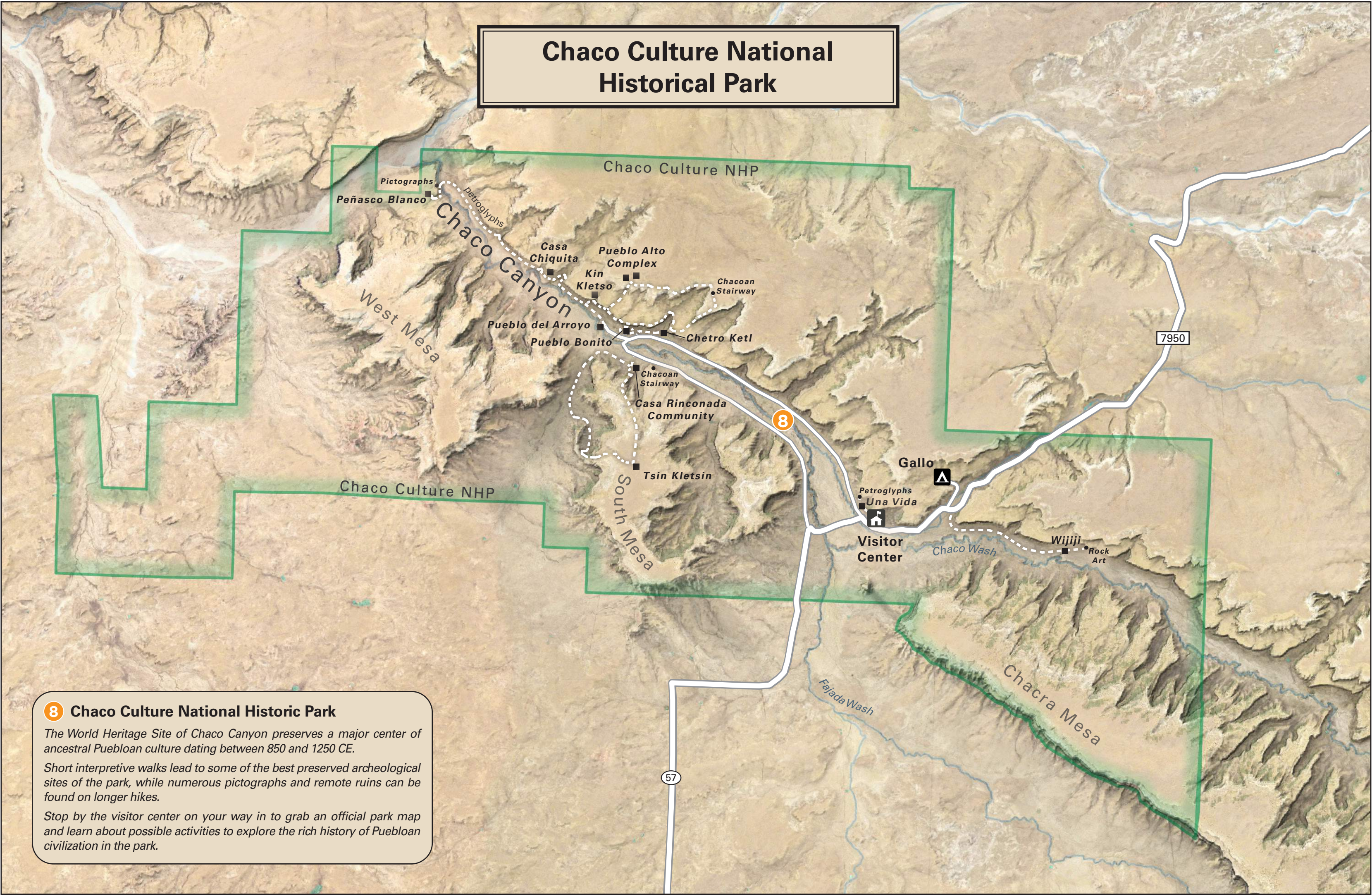
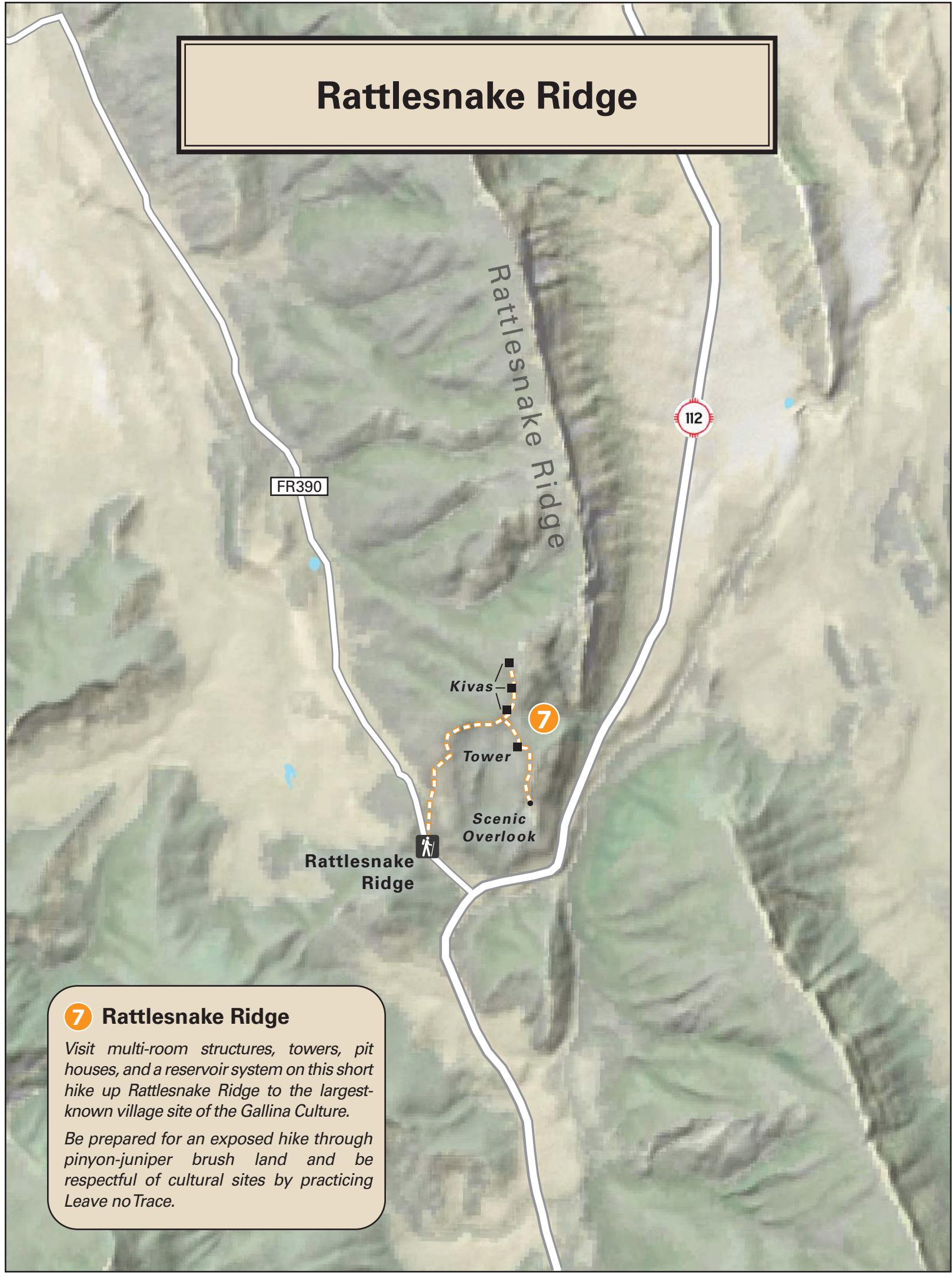
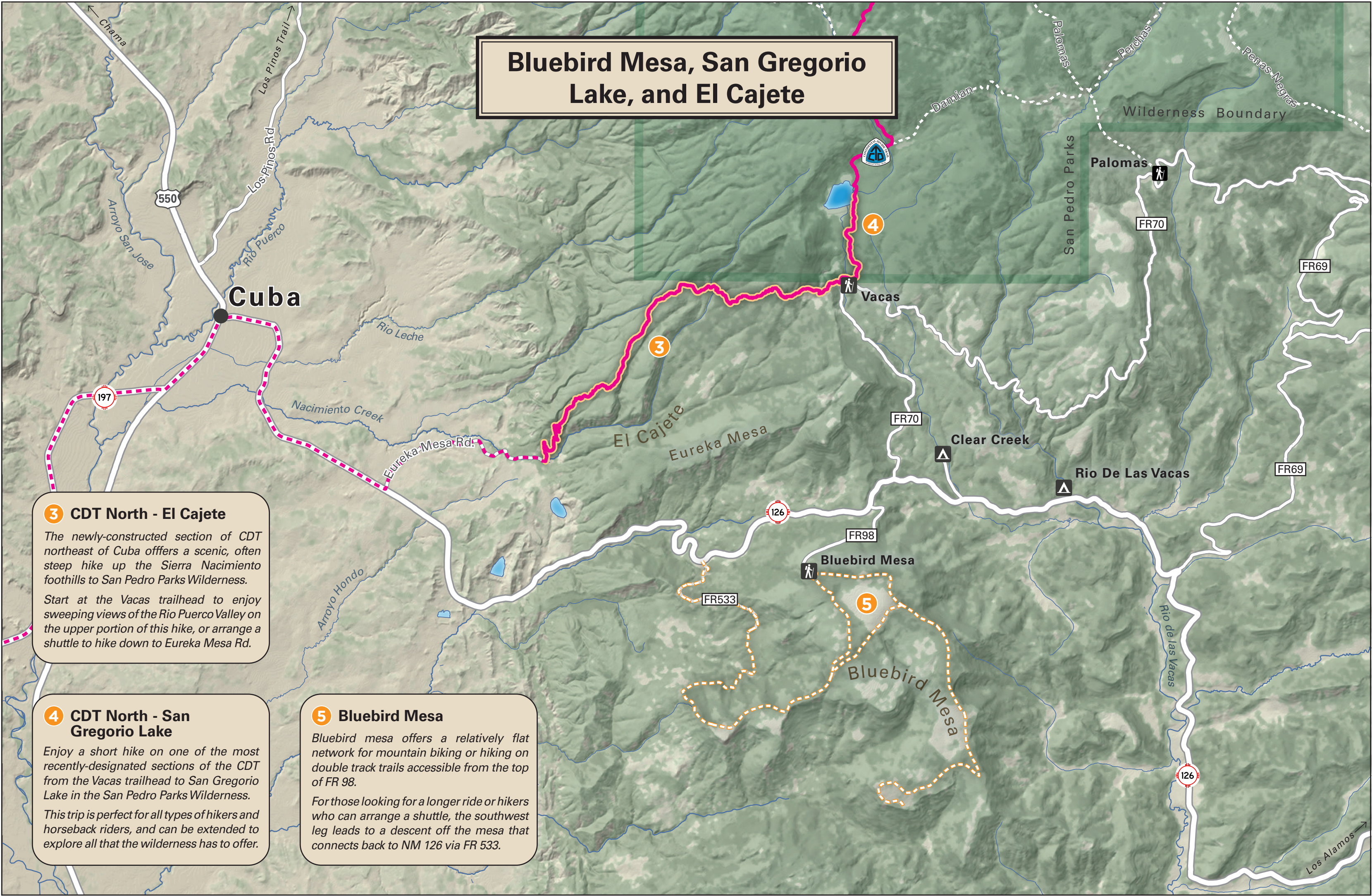
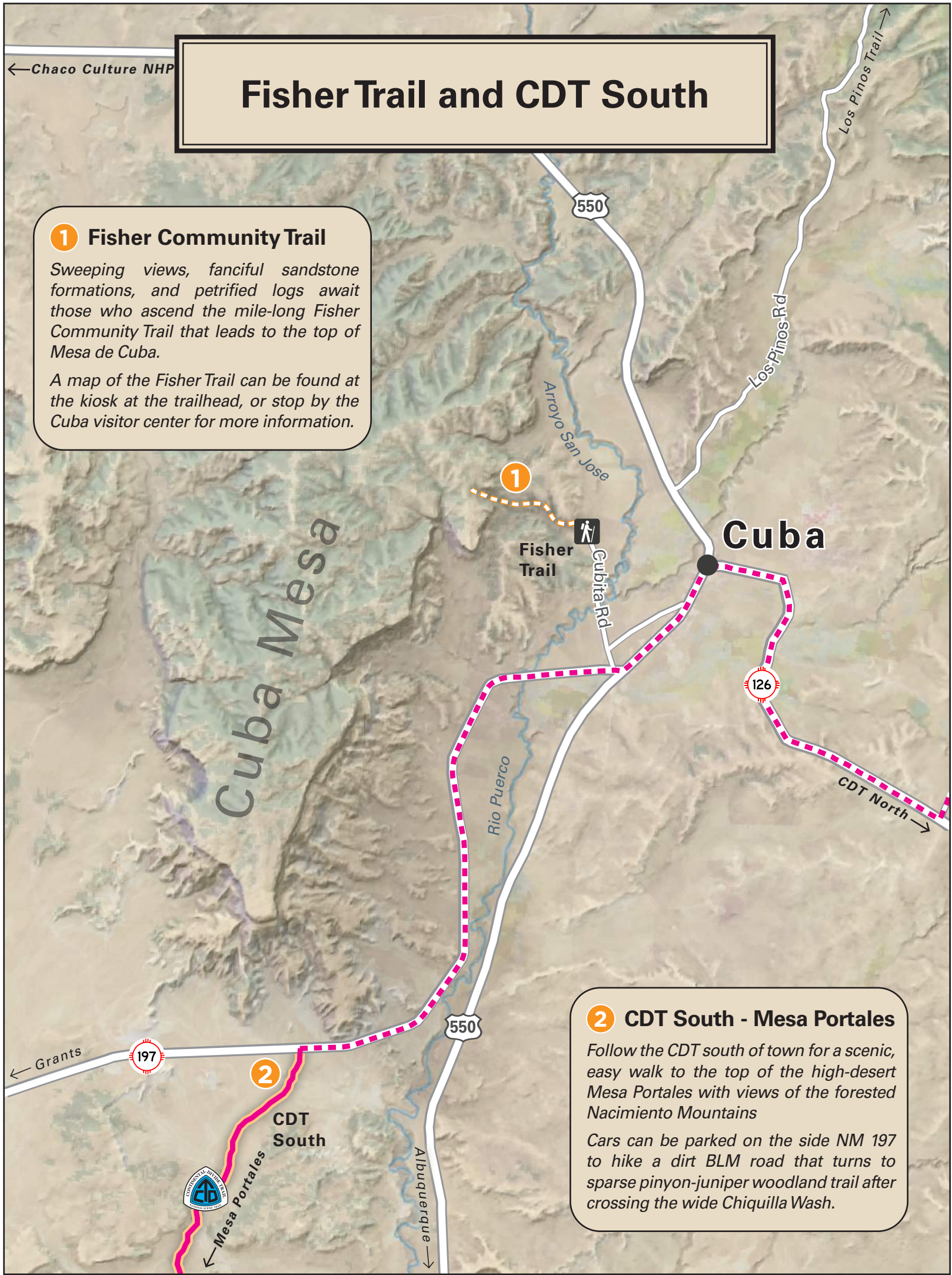
### Chaco Culture National Historical Park

Walk among world-famous ruins in the footsteps of an ancient culture in a wildly beautiful desert landscape a 1.5 hour drive from Cuba.

Multiple Hikes Cultural Hike Pets on Leash







## EXPLORE Cuba

Nestled against the Sierra Nacimiento on the western border of the Santa Fe National Forest, Cuba, New Mexico, sits atop the Continental Divide at 6,900 feet. Home to nearly 750 residents, this diverse gateway community is a hidden gem tucked between notable cultural hubs and recreational hot spots of the enchanted high desert and Four Corners region.

In 1769, Spanish Governor Pedro Fermin de Mendinueta made the San Joaquin del Nacimiento land grant to 35 pioneering families who had settled the headwaters of the Rio Puerco in 1766. The community was later abandoned, owing to raids by frontier Indian tribes, but was resettled in the late 1870s. Originally known as Nacimiento, or La Laguna, it was renamed Cuba when the post office was established in 1887.

Na'azisi To' (Gophers' Water) is the Navajo place name for Cuba. Since the 11th century, this wilderness area of the Upper Puerco was used by subsistence cultures — the Apache, Navajo, and Pueblo people. This region is located within the Navajo Four Sacred mountains, and many landforms are representative of characters in rich lore for our cultures. Today, we continue weaving our ancestors' cultural fabrics of language and traditions into our daily lives.

Cuba offers full-service amenities and a wealth of opportunity for adventure-seekers and Southwest enthusiasts alike. Discover some of the trails that help make Cuba “naturally wonderful” with this regional recreation map!